

L'intervento psico-educazionale al caregiver della persona con diagnosi di demenza



INRCA - Ancona
UOC Neurologia - Percorso Demenze
Alessandra Raccichini
a.raccichini@inrca.it



Dati preliminari

100 diadi: paziente (PZ) / caregiver (CG)

- 70 casi
- 30 controlli

Incontri solo CG: 10-12 persone

Durata tre mesi: 6 incontri quindicinali

Valutazioni CG: T0 - T1 - T2

Valutazione PZ: T0 - T2



Raccolta dati

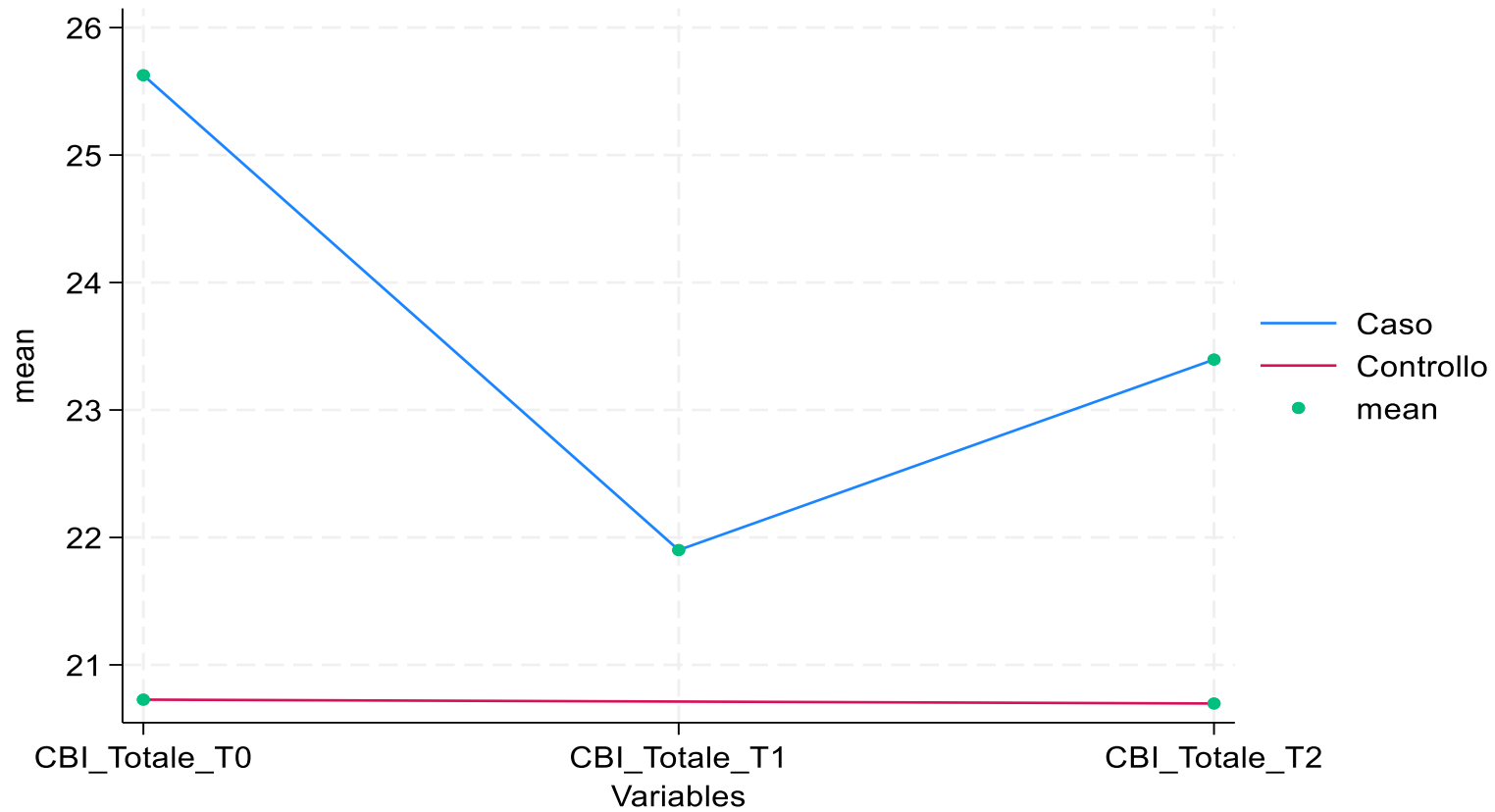
PAZIENTE:

- MMSE
- ADL
- IADL
- NPI

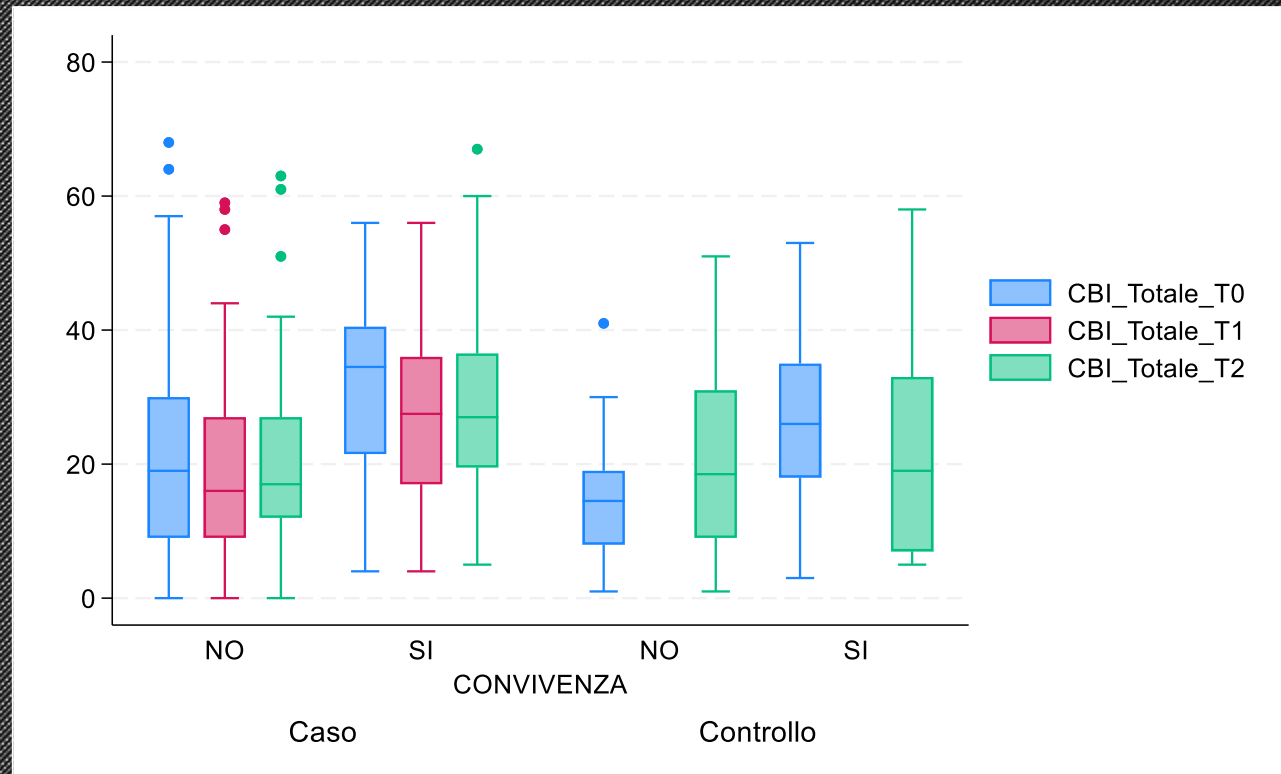
CAREGIVER:

- Scheda sociale
- CBI
- CES-D
- Brief-cope

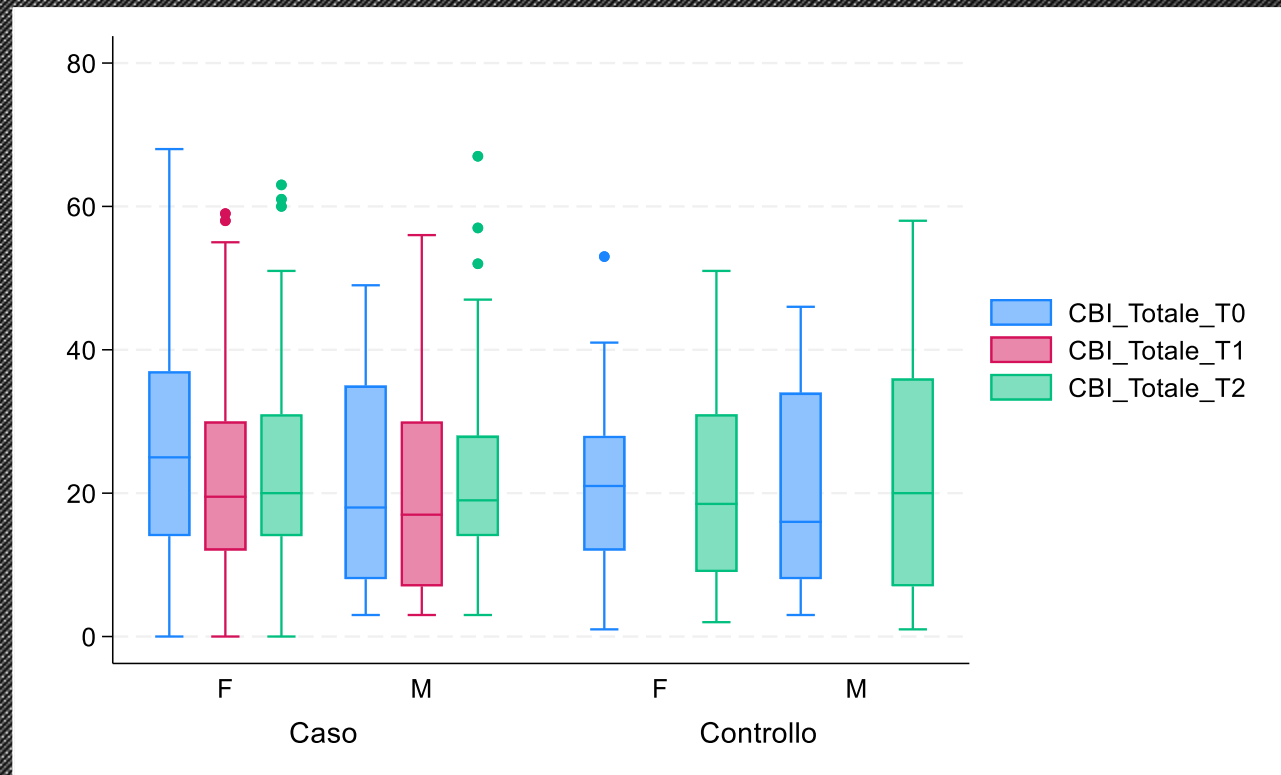
Caregiver Burden Inventory (CBI)



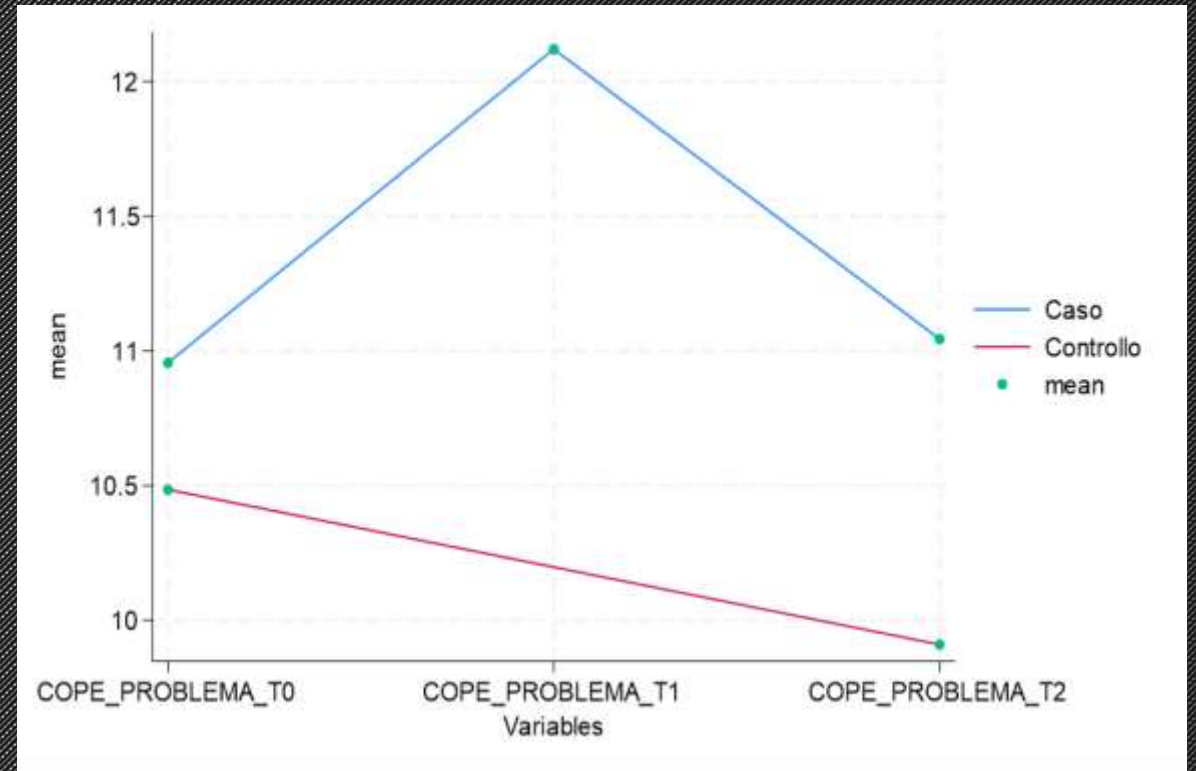
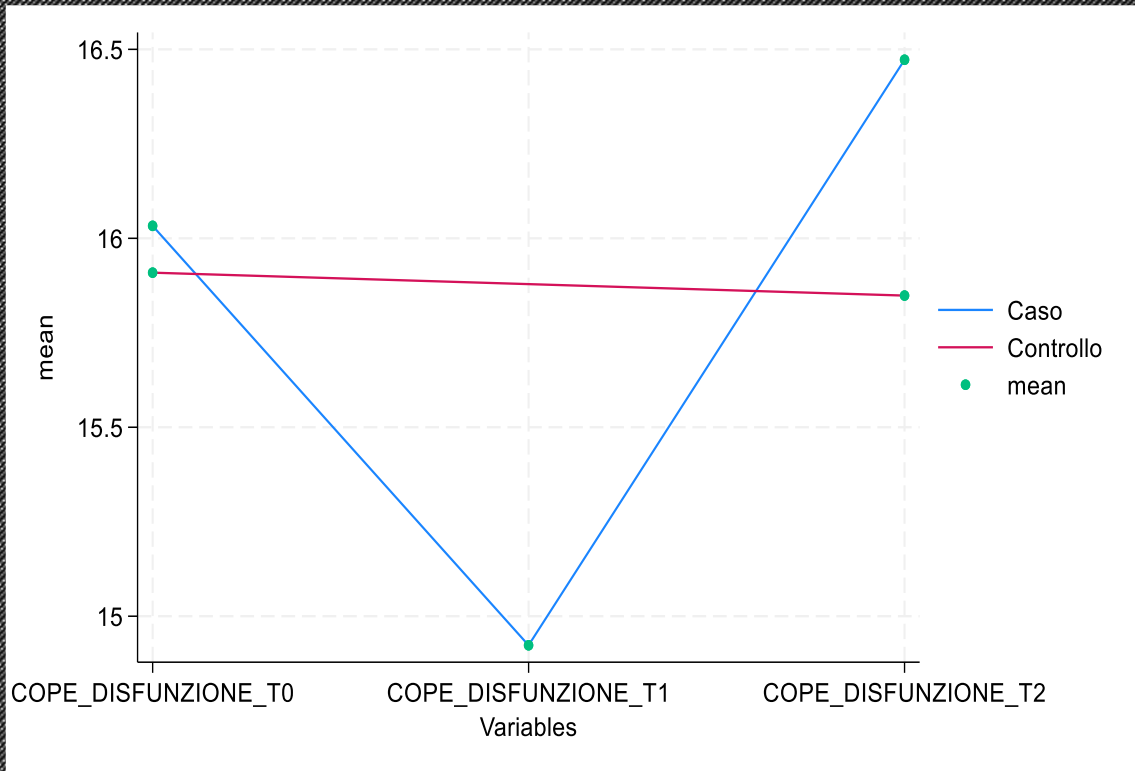
CBI convivenza



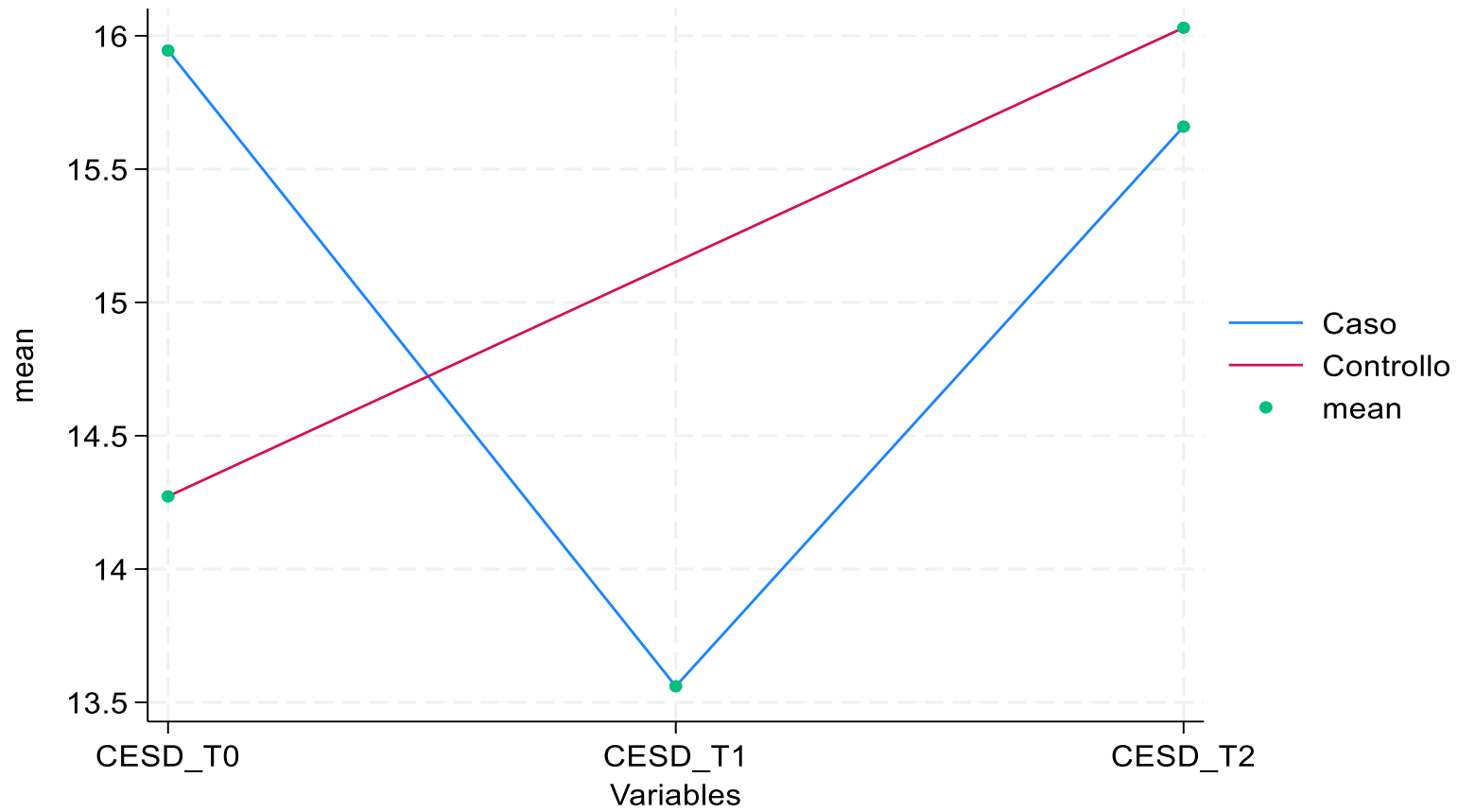
CBI sesso



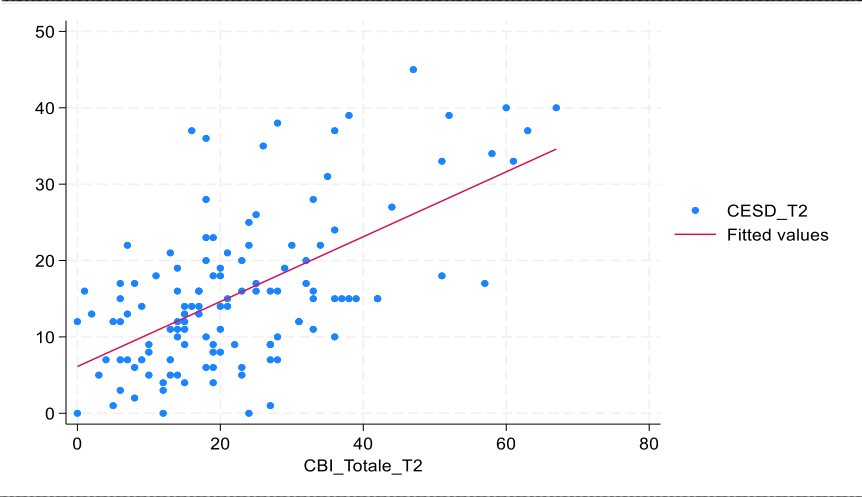
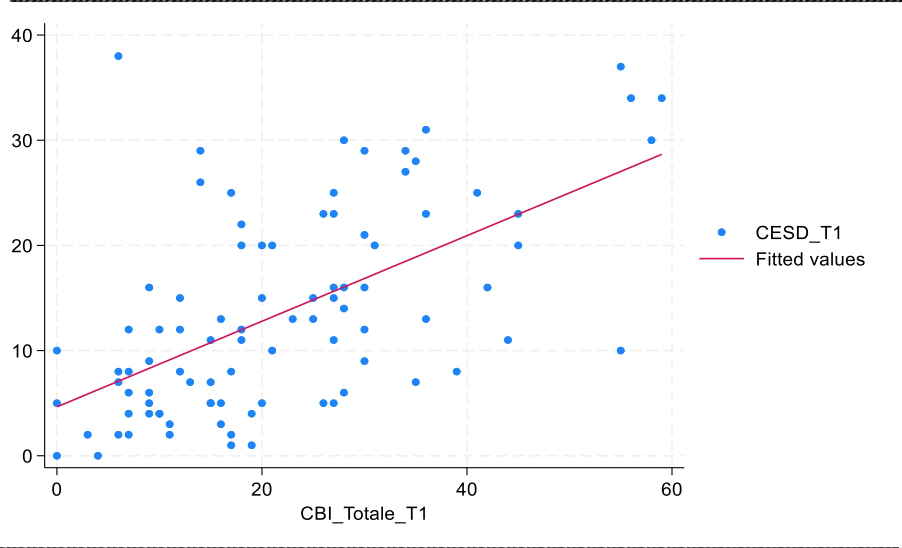
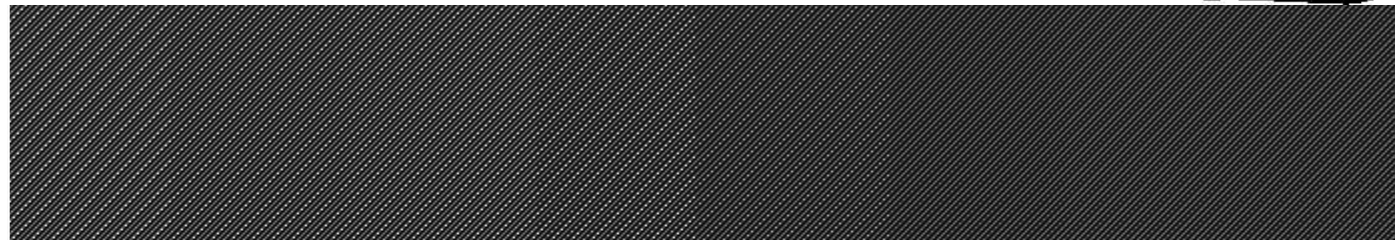
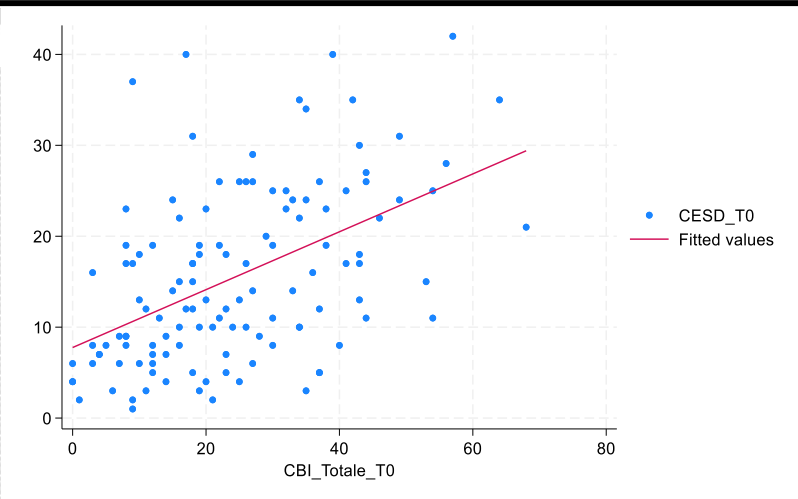
Brief-COPE (28 items)



CES-D



CBI vs CES-D





Grazie

a.raccichini@inrca.it

